

Aluminum Panelboard Lugs

Type PB

For use with two, three or four copper or aluminum conductors

- Manufactured from high strength aluminum alloy extrusion
- Electro-tin plated to ensure minimum contact resistance and protection against corrosion when used with copper wire
- Stack design allows for easy installation where space is limited
- Connectors are rated for 600 V, 90°C applications
- The use of oxide inhibitor is recommended for all aluminum terminations



486A-486B
LISTED
AL9CU



RoHS
COMPLIANT

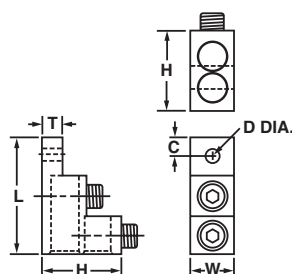
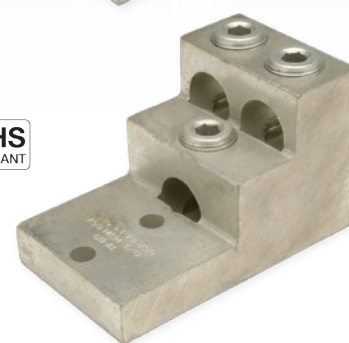


FIG. 1

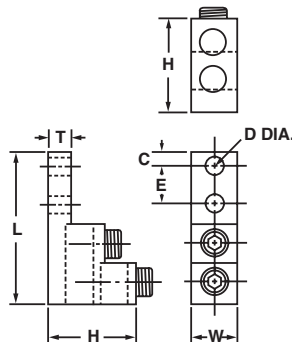


FIG. 2

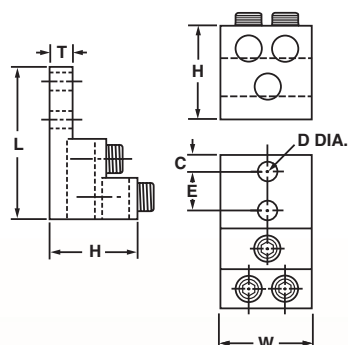


FIG. 3

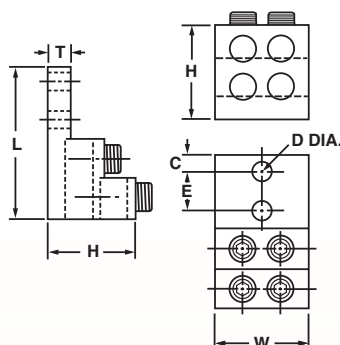


FIG. 4

CATALOG NUMBER	FIG. NO.	NUMBER OF CONDUCTORS	CONDUCTOR RANGE	APPROXIMATE DIMENSIONS (IN.)							MTG. BOLT SIZE	HEX SIZE
				L	W	H	T	C	D (DIA.)	E		
PB2-300	1	2	6 Str. - 300 kcmil	3.00	1.00	2.00	.31	.47	.33	-	5/16	5/16
PB2-600	2	2	2 Str. - 600 kcmil	4.91	1.50	3.00	.75	.38	.41	1.38	3/8	3/8
PB2-750	2	2	1/0 Str. - 750 kcmil	4.91	1.56	3.00	.75	.38	.41	1.38	3/8	3/8
PB3-600	3	3	2 Str. - 600 kcmil	4.91	2.50	3.00	.75	.38	.41	1.38	3/8	3/8
PB3-750	3	3	1/0 Str. - 750 kcmil	4.91	2.84	3.00	.75	.38	.41	1.38	3/8	3/8
PB4-600	4	4	2 Str. - 600 kcmil	4.91	2.50	3.00	.75	.38	.41	1.38	3/8	3/8
PB4-750	4	4	1/0 Str. - 750 kcmil	4.91	2.84	3.00	.75	.38	.41	1.38	3/8	3/8